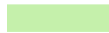

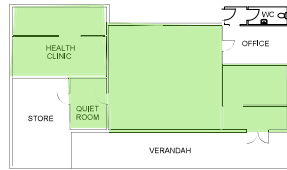


IAQ Map Legend - Winter Operation

 Natural ventilation: Operable windows and/or louvres should be used to manage fresh air, balancing thermal comfort and ventilation.

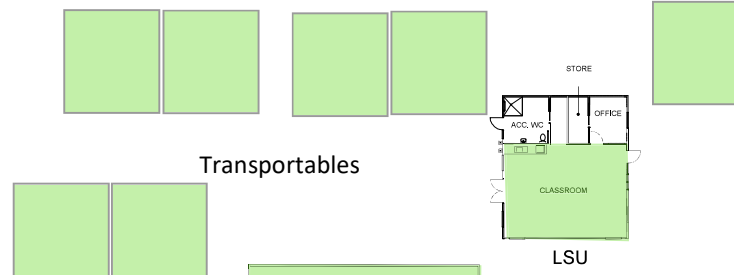
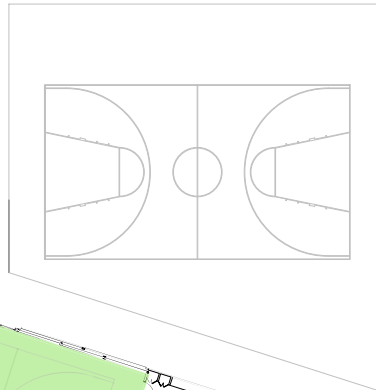
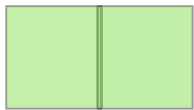
 Mechanical ventilation: Fresh air is introduced by the heating, ventilation and air conditioning system when in operation. Windows can remain closed and no action is required by the school.

Note: White spaces are to be used in accordance with COVID-19 requirements and current health advice.



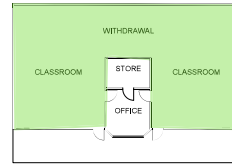
PRESCHOOL

Transportable

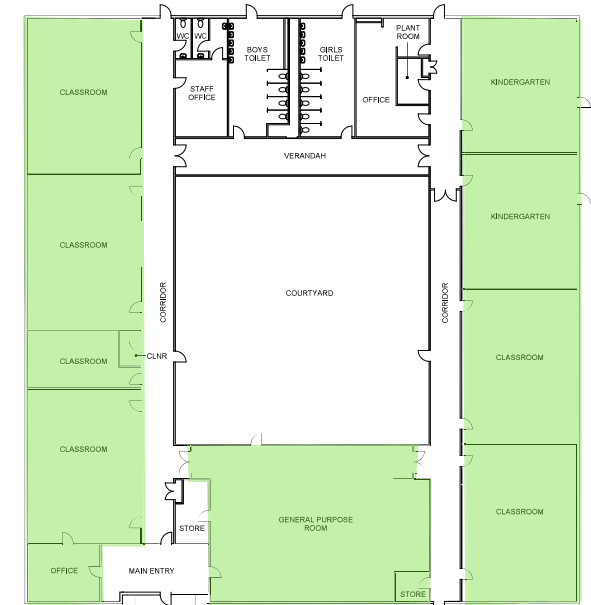


LSU

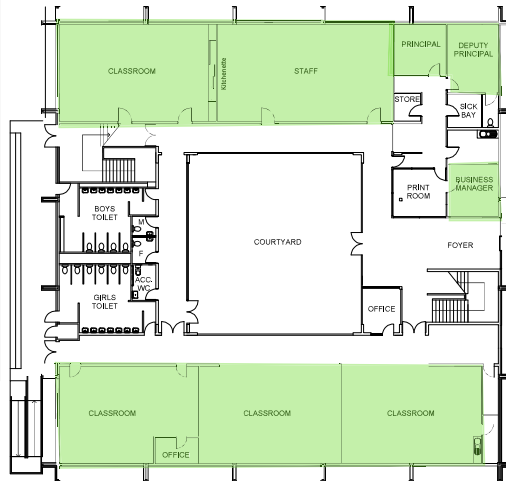
Transportables



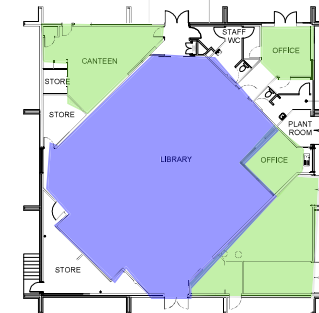
TRANSPORTABLE



INFANTS BLOCK



PRIMARY BLOCK



GROUND FLOOR

ISSUE	AMENDMENT	DRAWN	VER'D	APP'D	DATE



SCALE
1:400
DATE
MAY 2016
DRAWING SHEET SIZE = A3



PROJECT
GARRAN PUBLIC SCHOOL
INFRASTRUCTURE & CAPITAL WORKS
SCHOOL LAYOUT PLAN
GROUND FLOOR

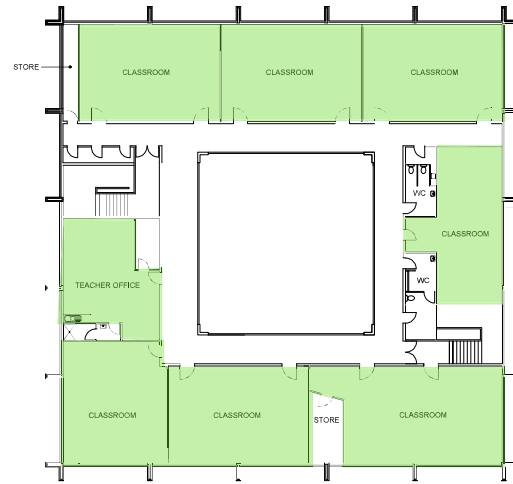
GARAGE

TRANSPORTABLE

TRANSPORTABLE

PRESCHOOL

INFANTS BLOCK



PRIMARY BLOCK

MULTI-PURPOSE HALL

LIBRARY

FIRST FLOOR

ISSUE	AMENDMENT	DRAWN	VER'D	APP'D	DATE



SCALE
1:400
DATE
MAY 2016
DRAWING SHEET SIZE = A3



ACT
Government
Education and Training

PROJECT
GARRAN PUBLIC SCHOOL
INFRASTRUCTURE & CAPITAL WORKS
SCHOOL LAYOUT PLAN
FIRST FLOOR